



INSTRUCTION MANUAL

Retain This Booklet for Future Reference

Made in India

TVL - 212

WARNING

Improper use of this product may cause an explosion or fire resulting in death, personal injury or property damage. Read these instructions carefully before using this product.

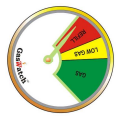
SAFETY PRECAUTIONS

- The TVL - 212 should be installed by a competent adult.
- Install the TVL - 212 in an open and well ventilated area.
- **Keep tank valve closed when appliance is not in use**
- Do not use any open flames, matches or fire nearby when installing, connecting, disconnecting or testing the TVL - 212

TO DETERMINE GAS LEVEL:

- The TVL - 212 gauge provides reading while propane is flowing in the system. It only indicates approximate amount of propane left in the tank.

If the needle points to :



Refill	Tank should be refilled to avoid running out of gas while cooking.
Low Gas	Early warning of low gas in tank.
Gas	There is still plenty of gas in the tank.

- Depending on the outside temperature, when TVL - 212 gauge shows REFILL, you have about 20 minutes of propane left in the tank.

REMEMBER: Allow propane to flow for at least 5 minutes before checking the gas level on the gauge. It is best to read propane level just before finishing the use of gas appliance and determine whether to refill the tank before next use.

Note : Before refilling or exchanging your cylinder, remove the GasWatch for reuse with your new or refilled cylinder.

Gauge display based on temperatures:

In extremely cold weather conditions (below freezing), the propane in the cylinder may not vaporize as quickly as required, thus the gauge will read in or about the yellow zone.

HANDY HINTS :

- Lean the TVL - 212 at a slight angle to avoid rainwater from entering the device.
- If condensation forms under the gauge dial, disconnect TVL - 212 and place indoors until the condensation dries up. Then reconnect TVL - 212 back on the system.
- Visit our website www.gaswatch.com "Customer Care" page for additional and useful FAQs.

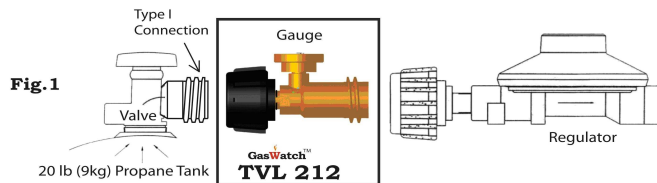
TVL International

Visit us on the web at www.gaswatch.com

INSTALLATION :

- See the diagram below (Fig. 1) before installation
- No tools are required to install TVL - 212
- Ensure all burner control knobs and propane tank are turned **OFF**.
- Disconnect regulator or high pressure system from the cylinder.
- Connect TVL - 212 to cylinder by tightening securely with gauge in vertically upright position as shown in Fig.1

DO NOT USE WRENCH TO TIGHTEN.



- Connect regulator or high pressure system to the TVL - 212
- Install under protective cover to avoid rain water entering into the TVL - 212

"LEAK TEST" PROCEDURE

Note: Never use LP propane without testing for leaks in the System.

- Turn **OFF** the propane supply at the cylinder.
- Turn **OFF** all appliance burner controls.
- With the appliance burner control(s) in the **OFF** position, turn **ON** the propane cylinder valve. This pressurizes all lines to appliance(s)
- Now the gauge will provide the tank level reading. If the gauge still does not indicate the tank level, you are out of propane.
- Watch the needle position on the gauge. Wait for at least 3 seconds and then **CLOSE** the cylinder valve. The TVL - 212 now monitors pressure between the propane tank and the appliance. Any leaks in line between the tank and appliance will be indicated by the needle's observable movement towards **red color**.

LOCATING THE LEAK

- To detect location of the leak, apply soap solution to all connections and look for bubbles. Expanding bubbles indicate location of the leak.
- If you find a leak - **DO NOT USE PROPANE TANK**
- Repair all leaks prior to using propane cylinder or appliance. Re-tighten where bubbles appear, recheck for leaks using the soap solution.
- If bubbles persist, you still have a leak - **STOP - DO NOT USE** the propane cylinder and appliance(s). Have a qualified propane service technician recheck your propane system and correct leaks before using the propane system.

LIMITED WARRANTY

TVL International, warranties your TVL - 212 adaptor to be free from defect in materials and workmanship for one year from the original purchase date. Should the product have a defect in materials or workmanship, we will repair or replace it without charge to you. A shipping and processing fee may apply. This warranty does not cover any damage caused by accident, misuse or any use not intended and described in this owner guide, or damage resulting from failure to maintain this product as specified in the manual.

***Life of this product is 3 years under normal usage.**

To obtain services under warranty, contact our customer service center at Phone - (704) 814 0930, or write to:

TVL International, LLC
2301 Crownpoint Executive Dr. Suite D
Charlotte, NC 28227

www.gaswatch.com